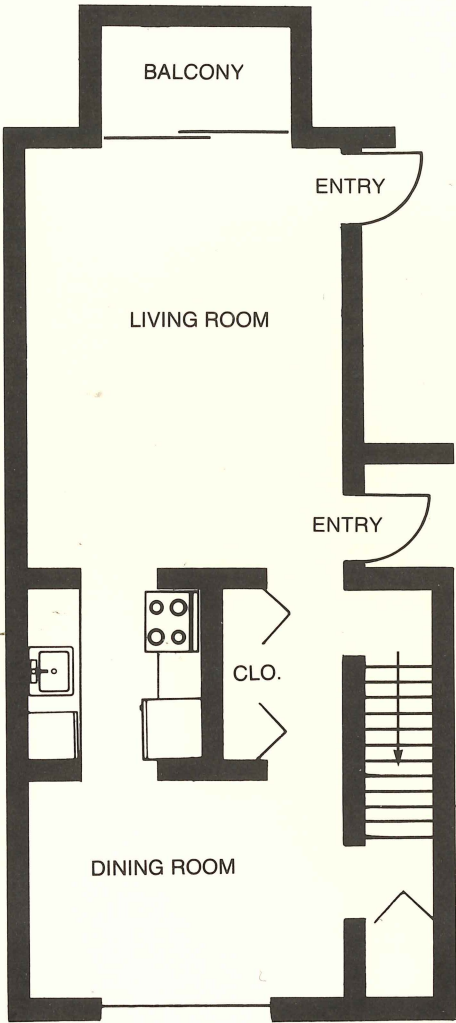




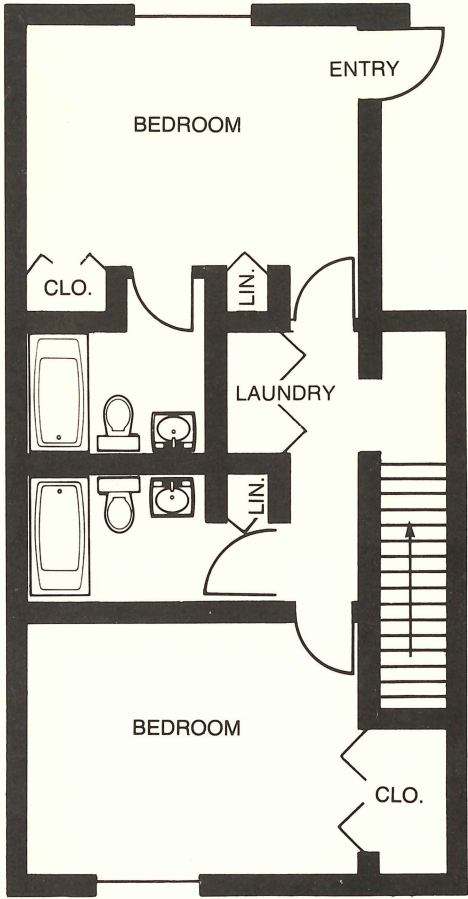
HARBOR·POINT

**TOWNHOUSE - B**

2 BEDROOMS, 2 BATHS  
DUPLEX



FIRST FLOOR PLAN



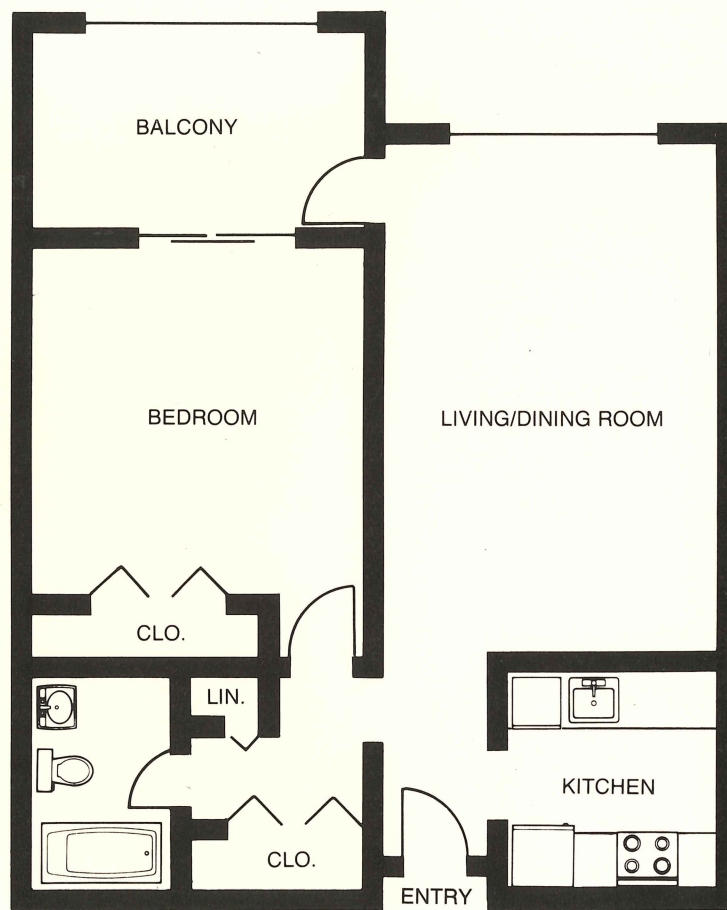
SECOND FLOOR PLAN



HARBOR · POINT

**MIDRISE APT - EE**

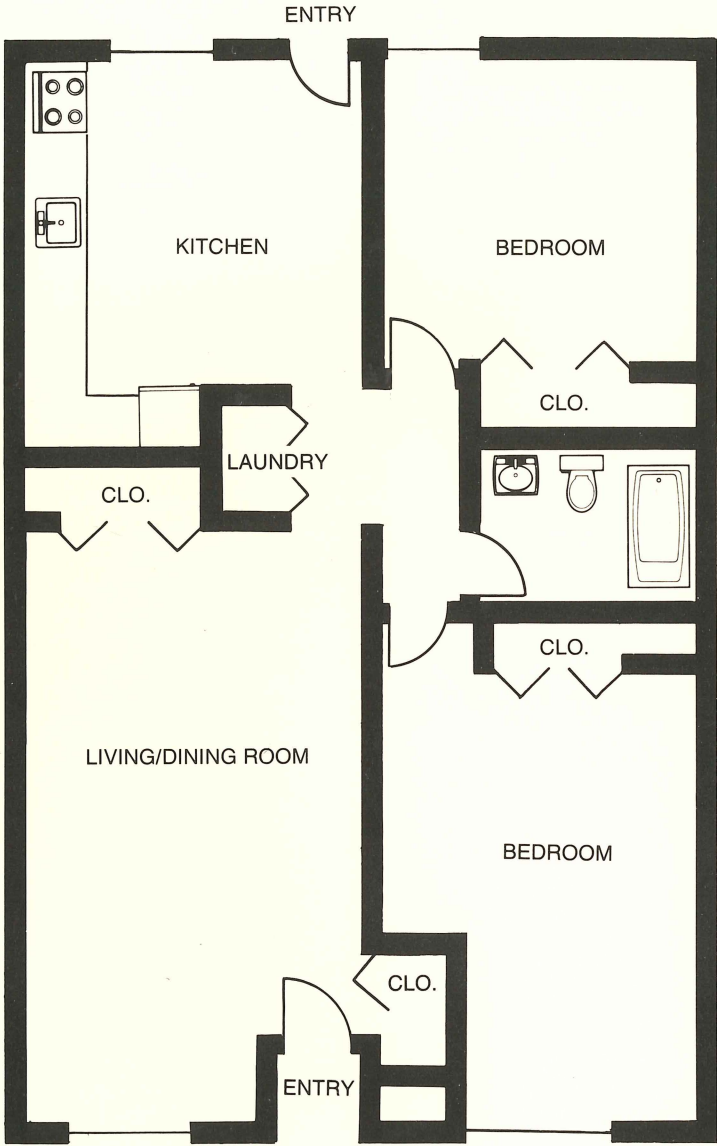
ONE BEDROOM, BALCONY





HARBOR·POINT

**MALL APT - F**  
2 BEDROOMS

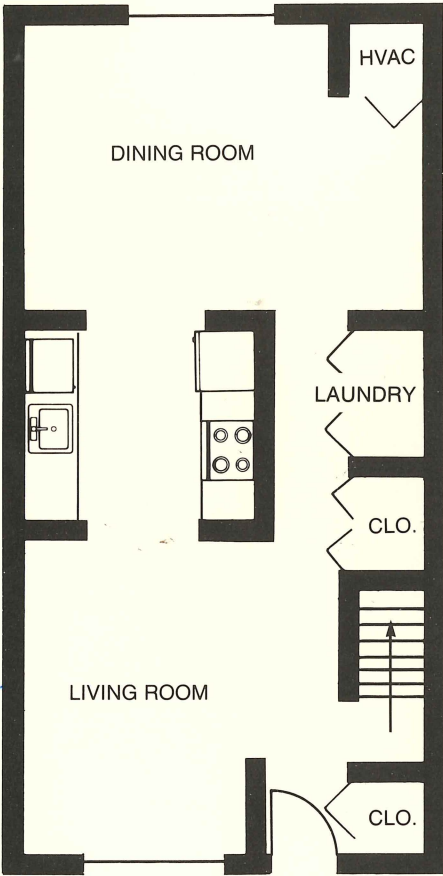




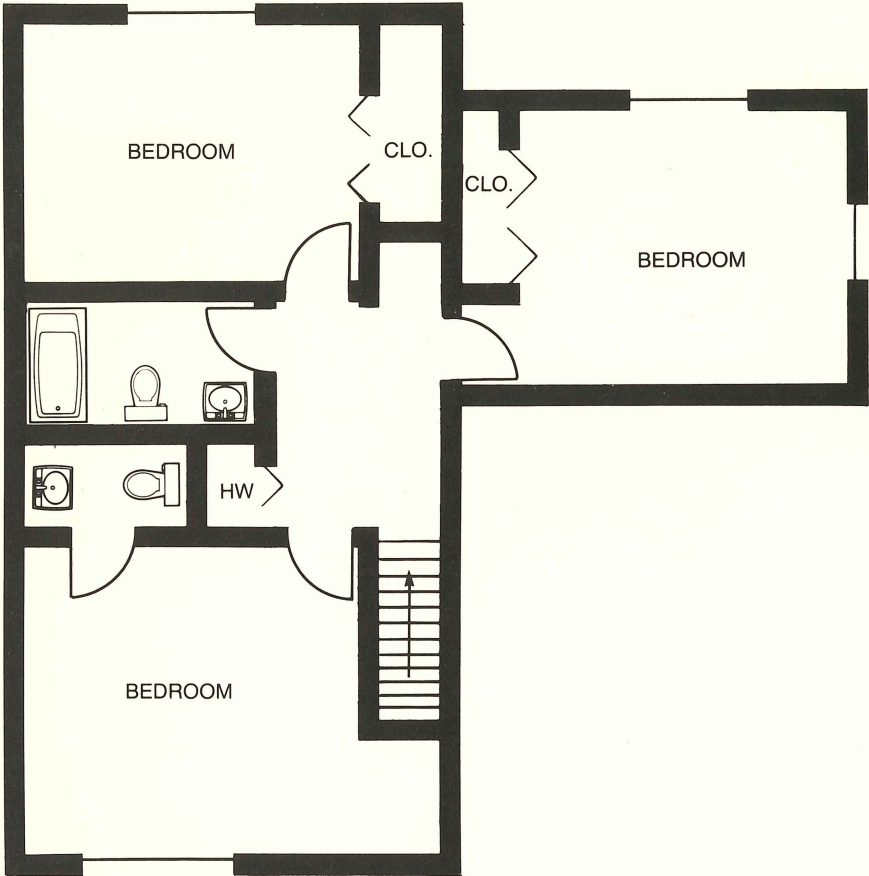
HARBOR · POINT

**TOWNHOUSE - V**

3 BEDROOMS, 1½ BATHS  
DUPLEX



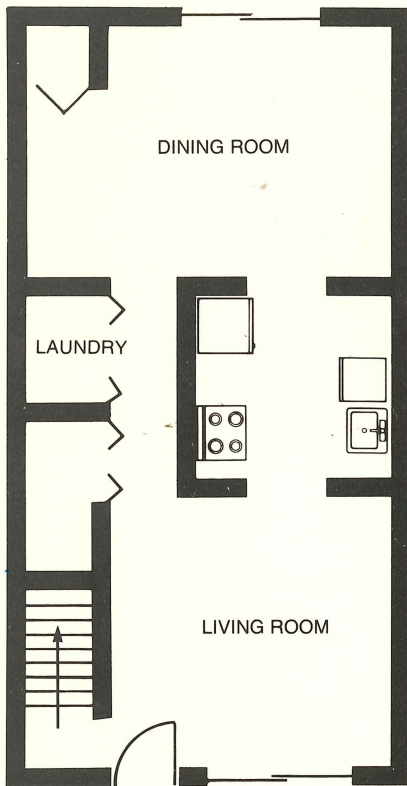
FIRST FLOOR PLAN



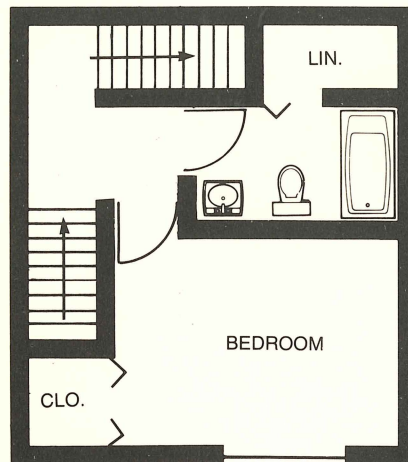
SECOND FLOOR PLAN

## TOWNHOUSE - W

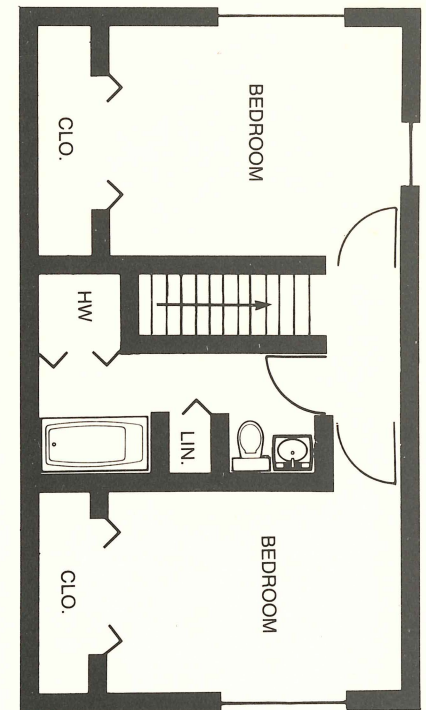
3 BEDROOMS, 2 BATHS  
TRIPLEX



FIRST FLOOR PLAN



SECOND FLOOR PLAN



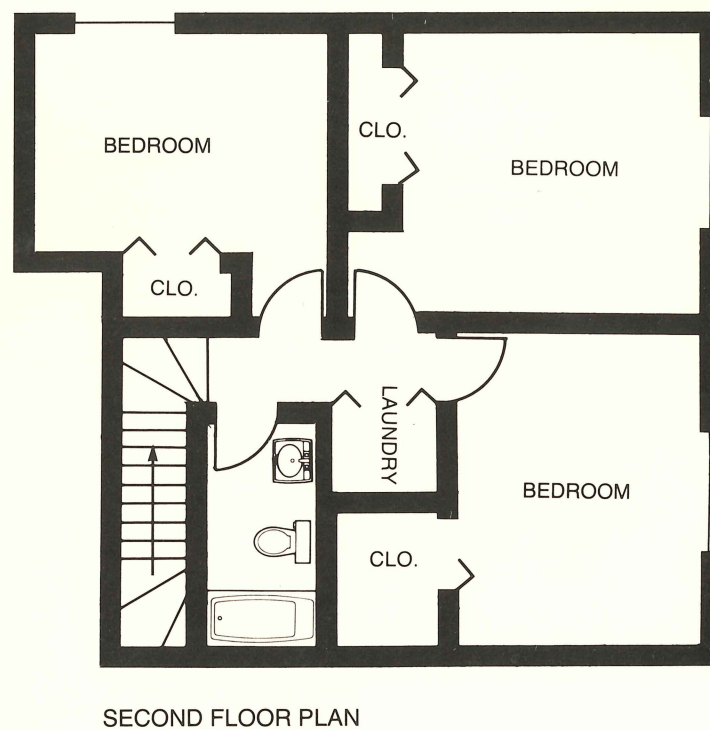
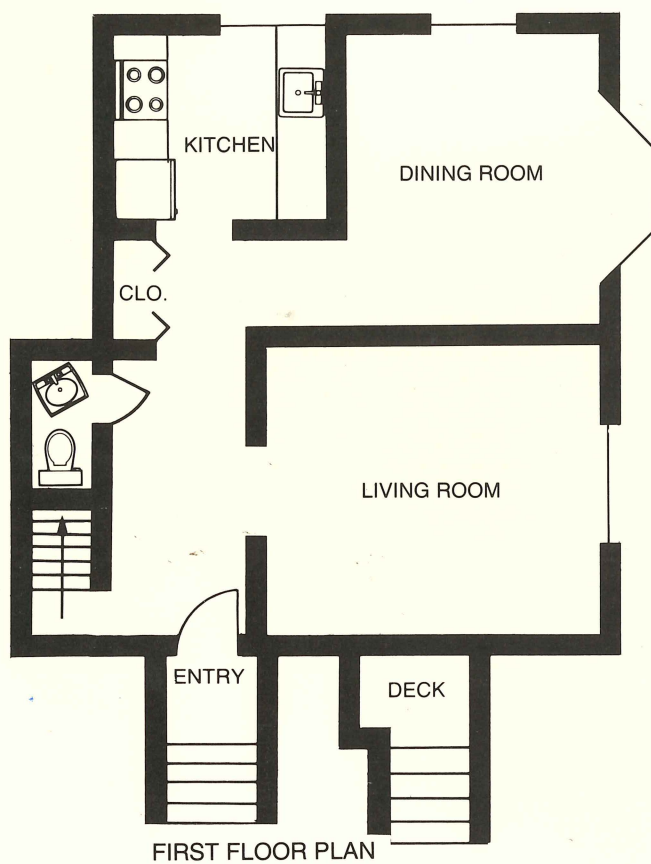
THIRD FLOOR PLAN



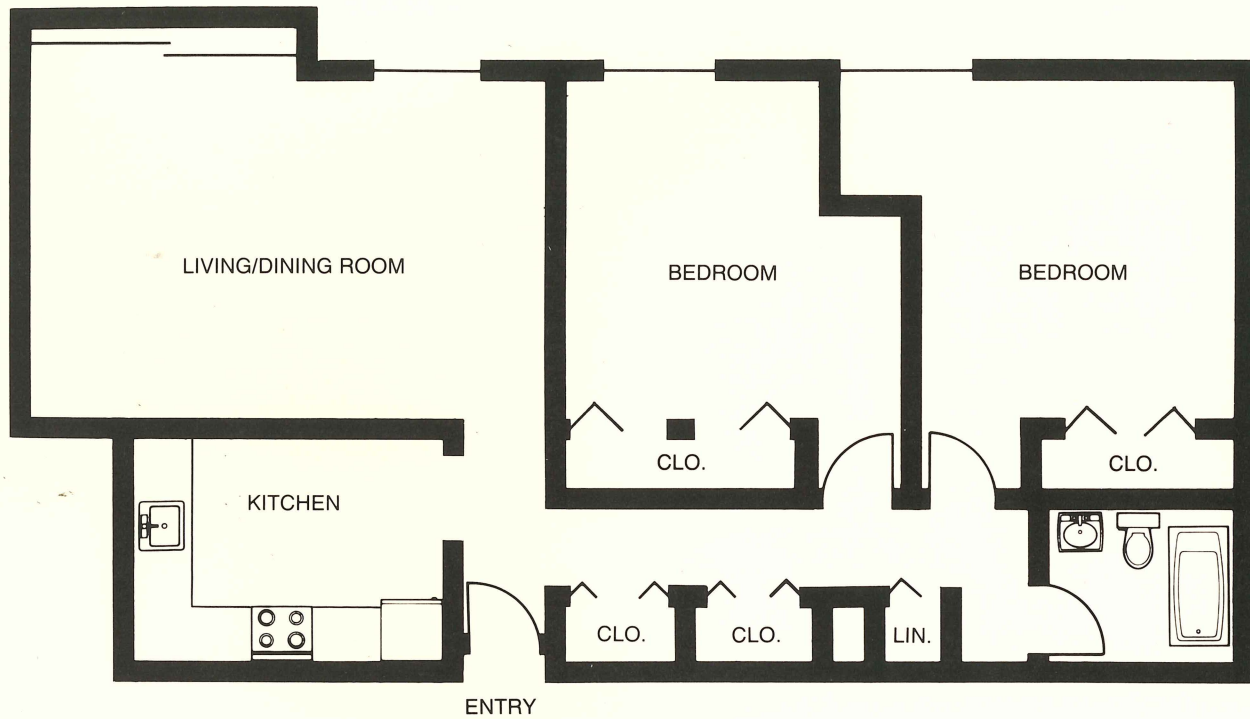
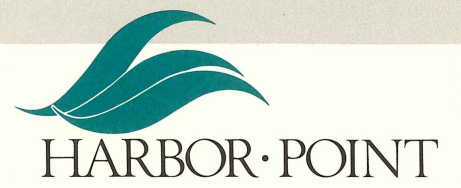
HARBOR·POINT

## GARDEN APT - RR8

3 BEDROOMS, 1½ BATHS, DUPLEX

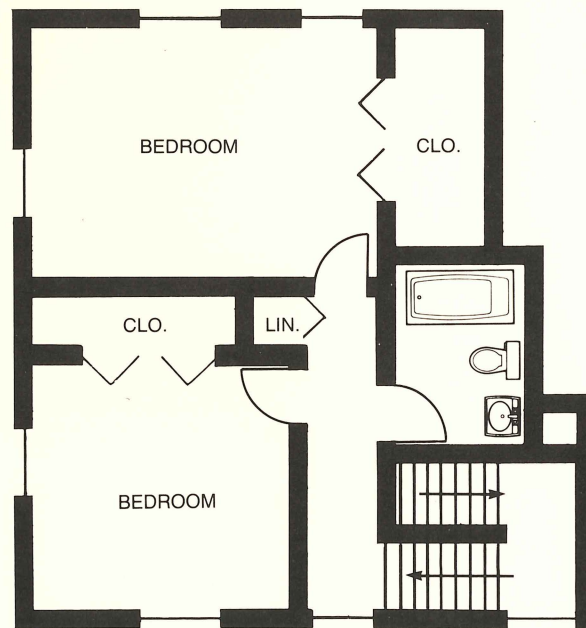
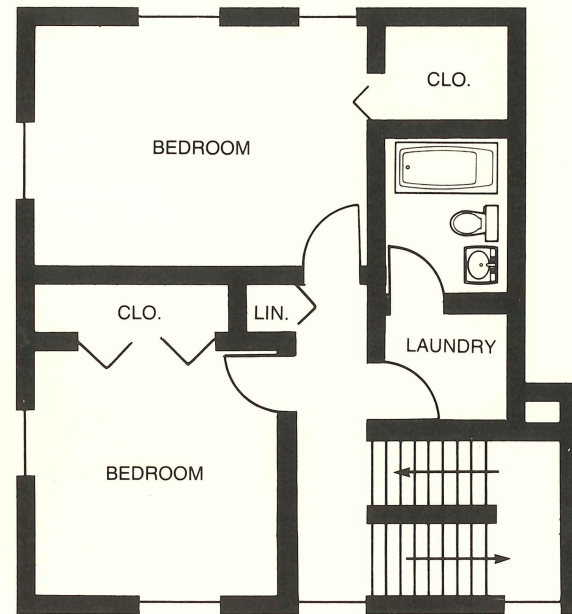
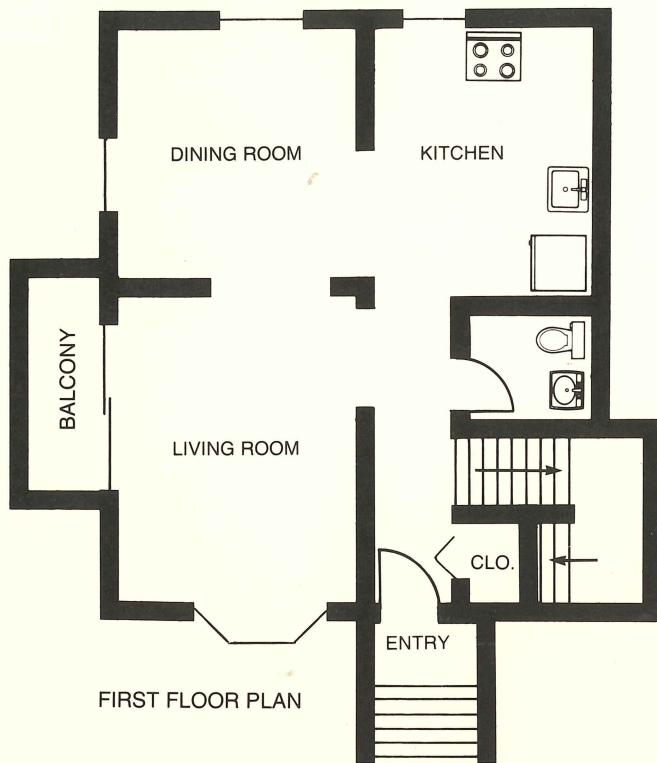


**GARDEN APT - QQ**  
2 BEDROOMS





HARBOR·POINT



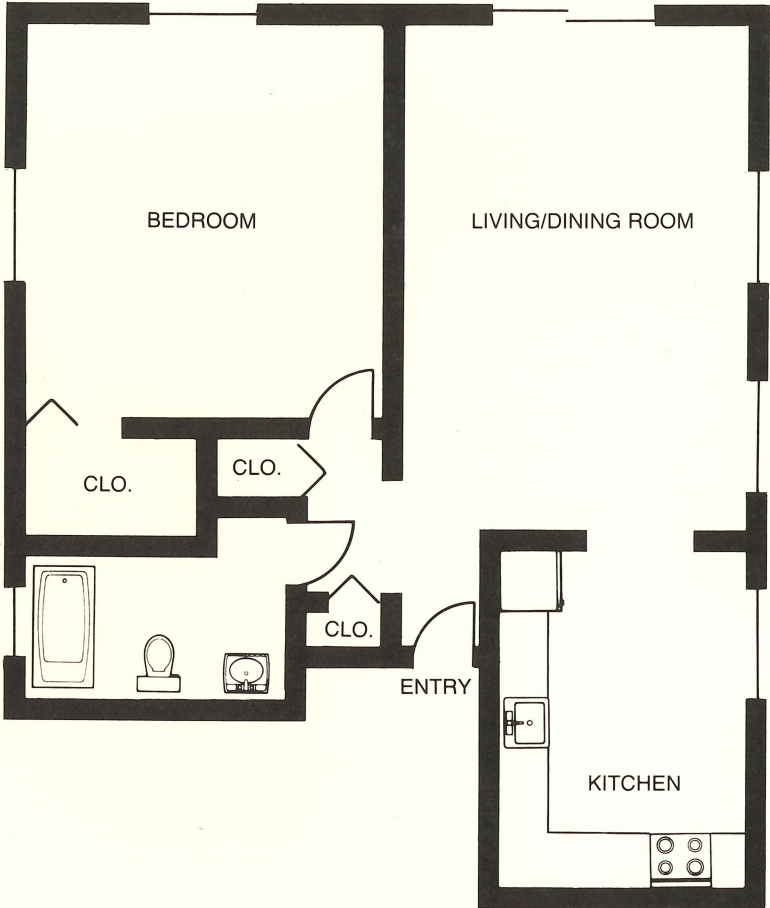
**GARDEN APT - WW**  
4 BEDROOMS, 2½ BATHS  
TRIPLEX



HARBOR · POINT

**GARDEN APT - PPI**

ONE BEDROOM

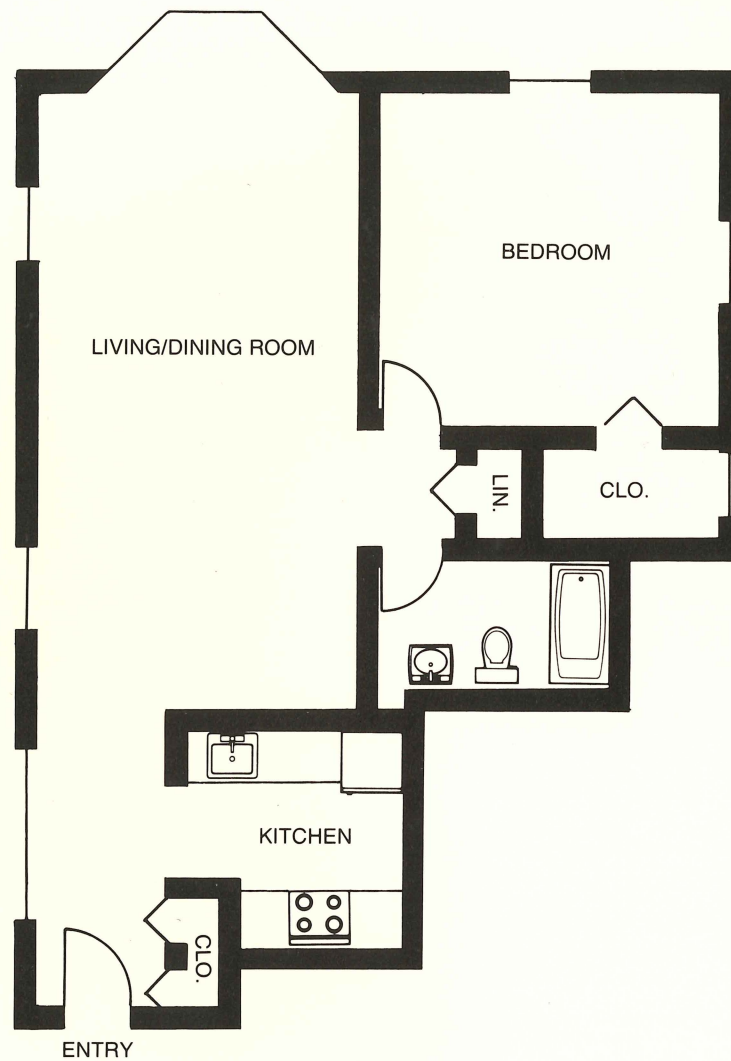




HARBOR · POINT

**WEST WIND COURT - AA**

1 BEDROOM, BAY

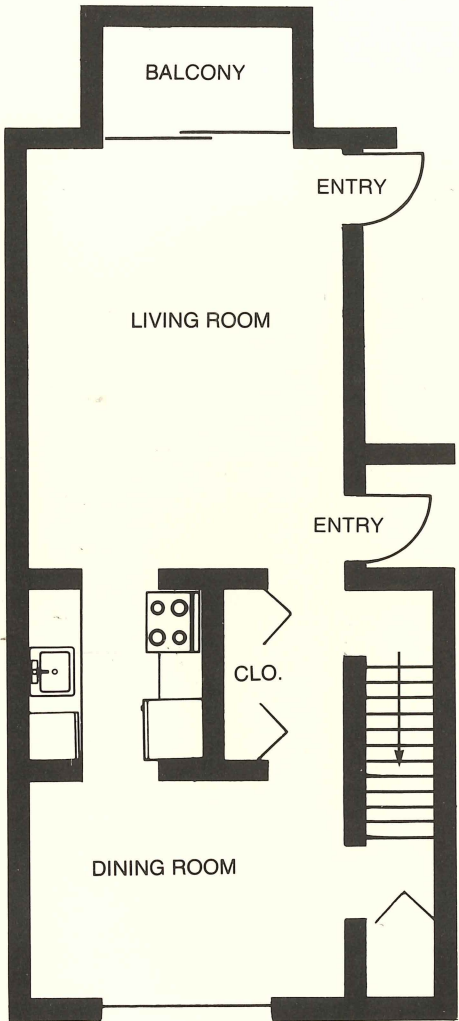




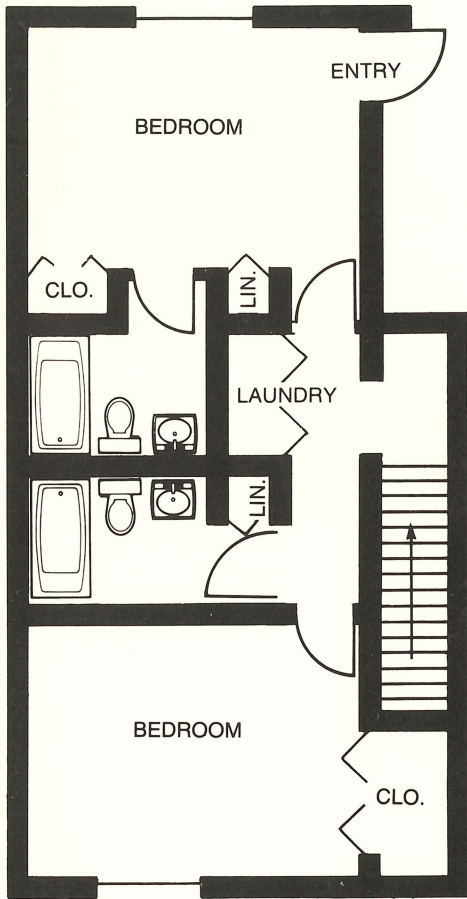
HARBOR·POINT

**TOWNHOUSE - B**

2 BEDROOMS, 2 BATHS  
DUPLEX



FIRST FLOOR PLAN



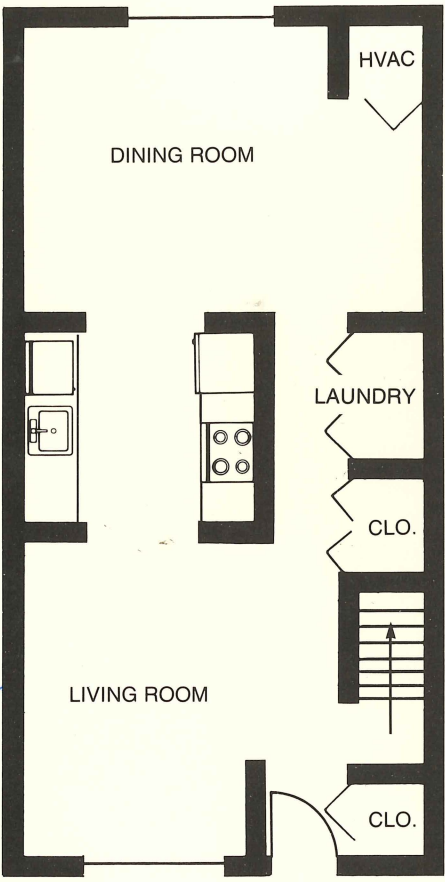
SECOND FLOOR PLAN



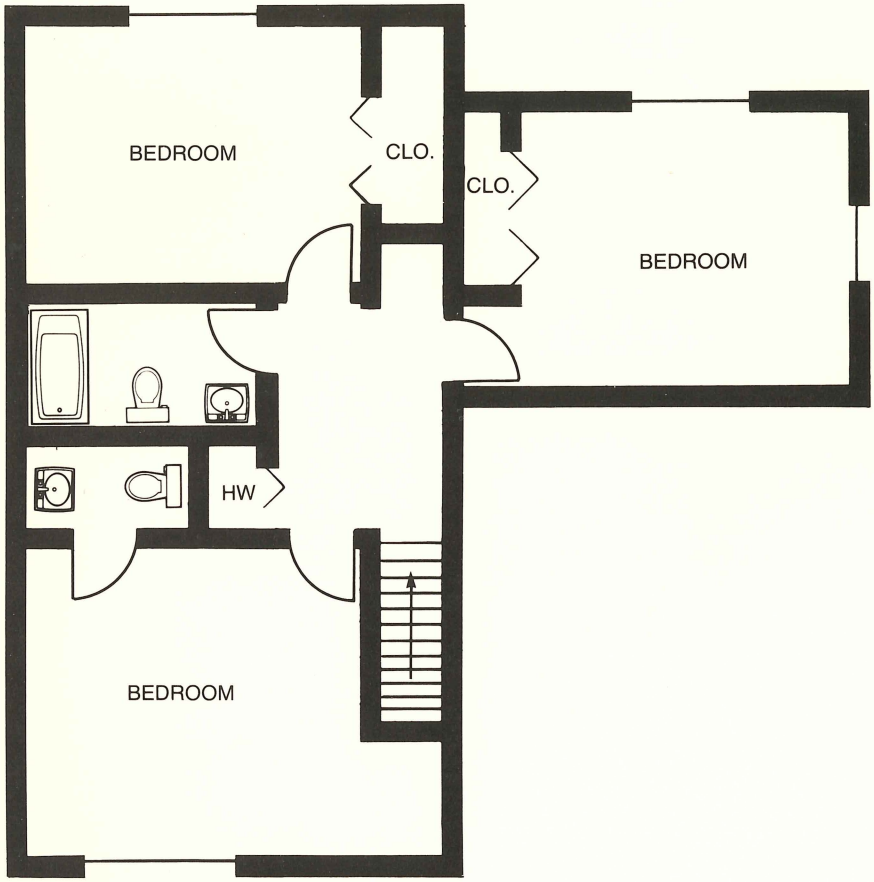
HARBOR · POINT

**TOWNHOUSE - V**

3 BEDROOMS, 1½ BATHS  
DUPLEX



FIRST FLOOR PLAN



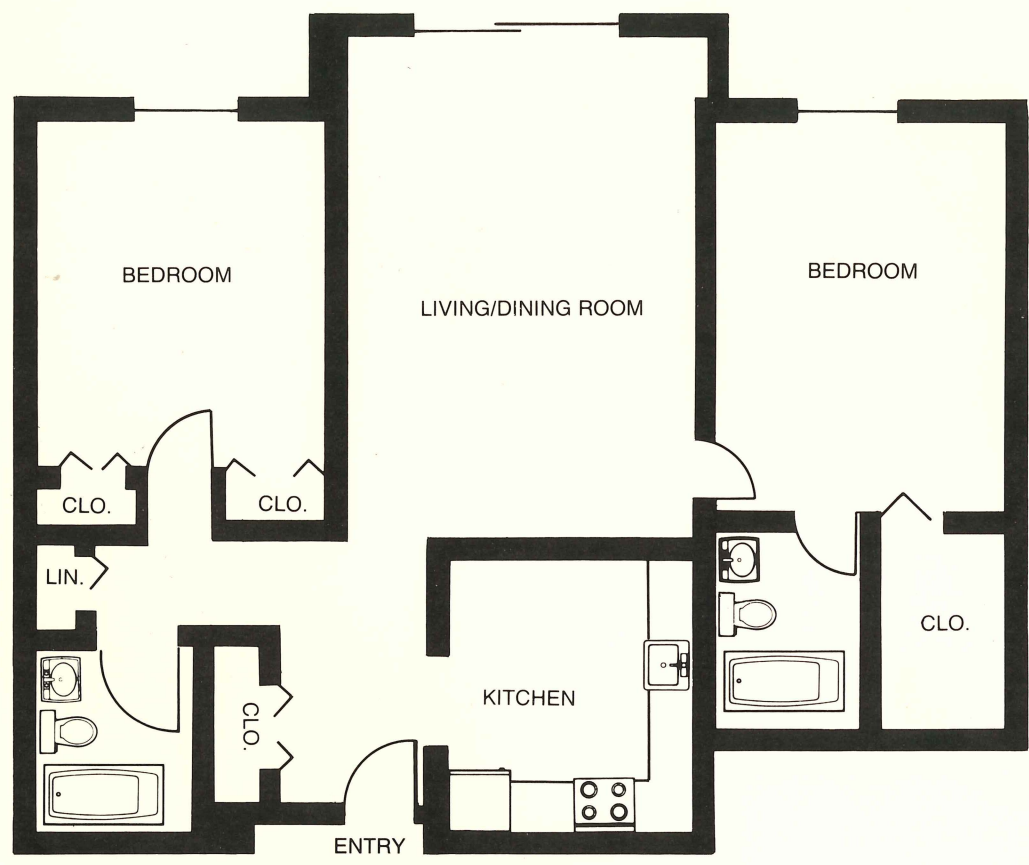
SECOND FLOOR PLAN



HARBOR · POINT

**MALL APT - G**

2 BEDROOMS, MINGLES





HARBOR·POINT

**MIDRISE APT - NN**

1 BEDROOM, BAY

